

ADVANCE FRONT MUDGUARD - FOR T LINE

IMPORTANT INFORMATION

- When replacing a mudguard, make a note of the order of assembly of washers and brackets on the brake bolt and ensure that the same parts are used in the same order on reassembly
- When fitting a mudguard where there was formerly no mudguard; if there is not enough space to fit the mudguard bracket, you may need to remove a washer to make the correct stack (fig. 1). This will ensure proper engagement between the locking nut and the brake bolt
- It is vital that you follow the correct fitting procedure and tighten all fixings correctly; otherwise, the mudguard may interfere with front wheel or the function of the brake caliper.
- If you are unsure of the correct fitting process please consult your Brompton dealer or Brompton Customer Service support@brompton.co.uk

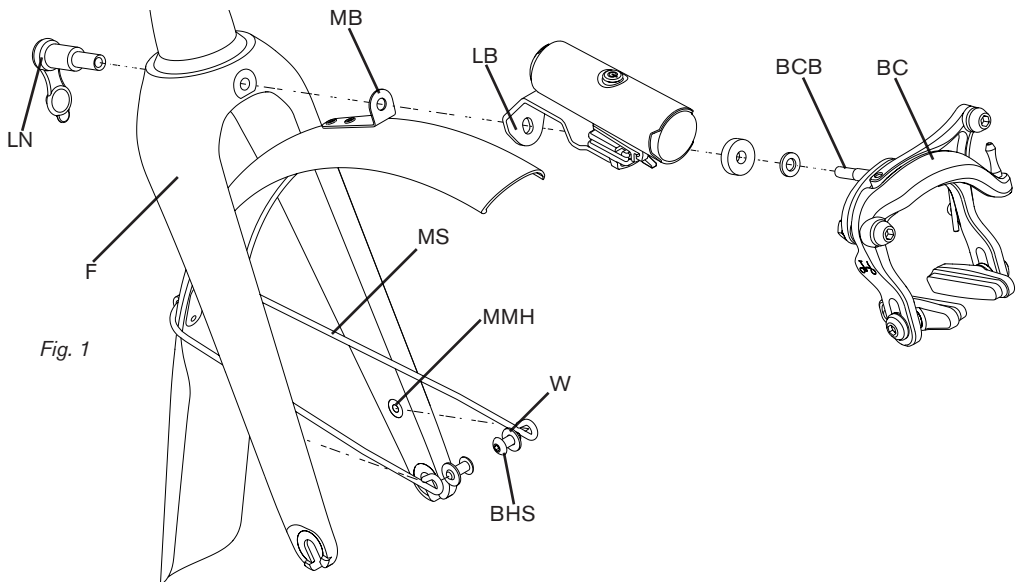


Fig. 1

FITTING

It is advised that the wheel is removed when fitting or removing the mudguard.

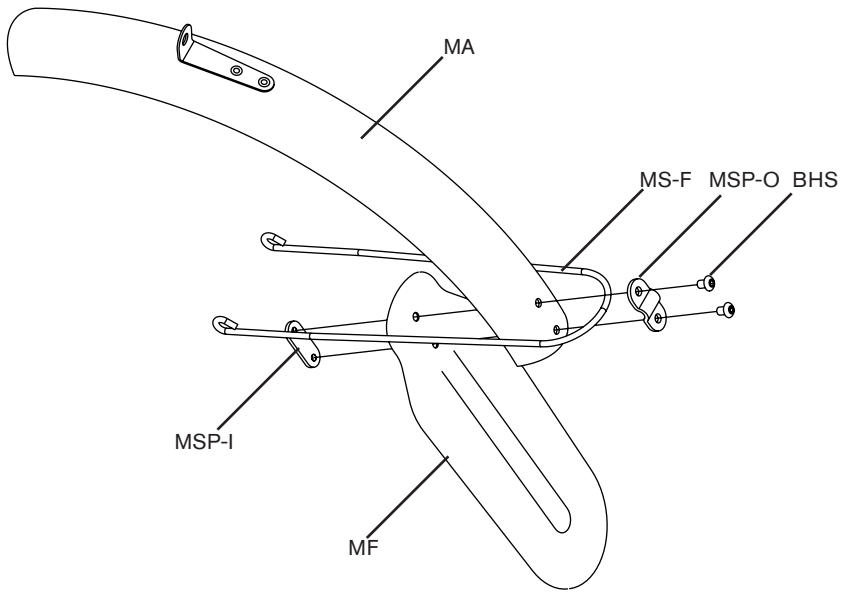
Remove the front brake caliper BC if already fitted by unscrewing the locking nut LN (fig. 1) located at the rear of the fork F. A washer may need to be removed if there was previously no mudguard fitted to make space for the mudguard bracket MB on the stack. Assemble the blade MA (fig. 2) along with the stays and other parts, tightening the screws BHS to 2Nm.

Insert the brake caliper bolt BCB into the MB ensuring the caliper is centered and the mudguard is not twisted. Complete the stack before re-inserting the BCB into the F. Tighten the LN to 8Nm. Insert both screws BHS to hold the mudguard stay MS in place on the inside of the F and tighten to 2Nm.

REMOVAL

To remove the mudguard, first remove both BHS holding the MS in place on the inside of the F (fig. 1). Then unscrew the LN located at the rear of the F which holds the front brake caliper, mudguard and light bracket LB in place. A 5mm hex key is required.

Fig. 2



To disassemble the mudguard blade MA, mudguard stay MS-F and the flap MF; unscrew both screws BHS and remove the mudguard stay plate MSP-I from inside and the plate MSP-O on the outside holding the mudguard stay in place. When refitting these parts tighten the screws BHS to 2Nm.

