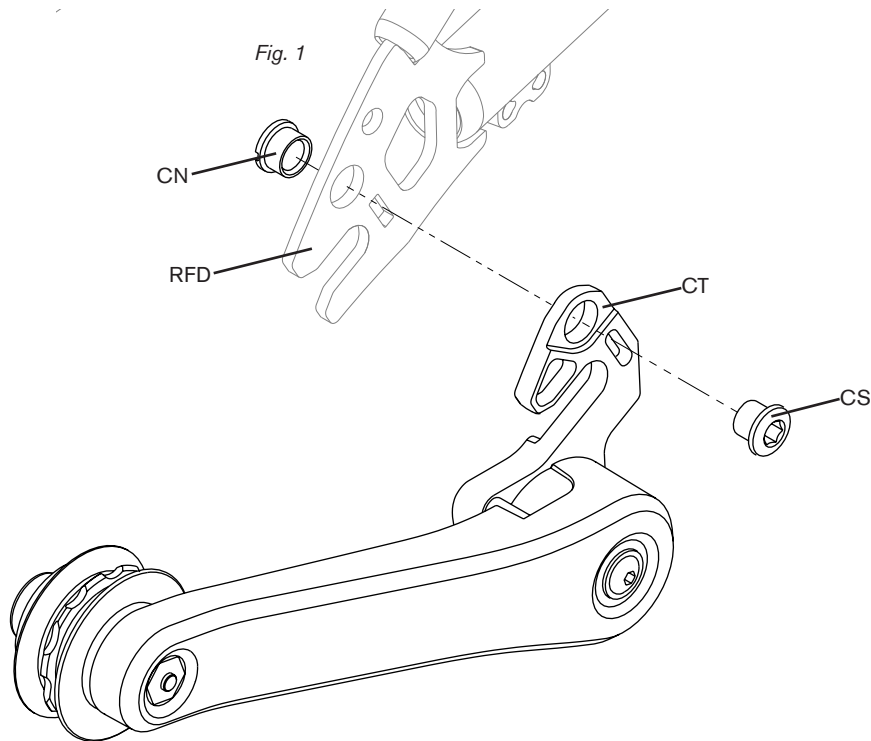


4 SPEED CHAIN TENSIONER

IMPORTANT INFORMATION

- It is vital that you follow the correct fitting procedure and tighten all fixings correctly
- If you are unsure of the correct fitting process please consult your Brompton dealer or Brompton Customer Service support@brompton.co.uk



REMOVAL

Disengage the chain tensioner CT to loosen the chain. Remove the rear wheel by removing the skewer bolt with a 5mm hex key, for the wheel to pass the brake caliper, the tyre has to be deflated. Remove the CT by removing the countersunk screw CS with a 5mm hex key.

FITTING

To fit the CT, place it into position on the rear frame dropout RFD and insert the countersunk nut CN in the hole on the inside of the RFD as shown (fig. 1). Screw the CS into the CN while holding the CT firmly. Tighten to 5Nm.

